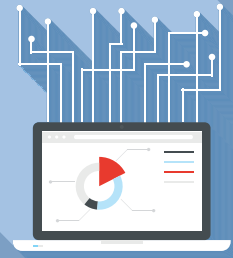


# 360° Data Analysis Checklist



## Is Your Data Actionable?

Use the checklist below to see if your medical spend data provides the actionable information you need to optimize your Workers' Compensation program.



Does your data enable you to:	YES	NO
Identify the top cost drivers of your program		
Determine outliers for early action		
Reduce your unit cost and utilization by medical category including state, injury type and location		
Minimize claims costs associated with physician dispensing		
Optimize the performance of your broad-based and specialty network		
Analyze the balance of your claim costs and administrative expenses resulting from nurse and physician clinical interventions		
Optimize your program to outperform industry benchmarks		
Synthesize and communicate the performance of your program		

If you did not answer yes to all of the items above, contact Genex at [analytics@genexservices.com](mailto:analytics@genexservices.com) to learn how to make your data actionable.