

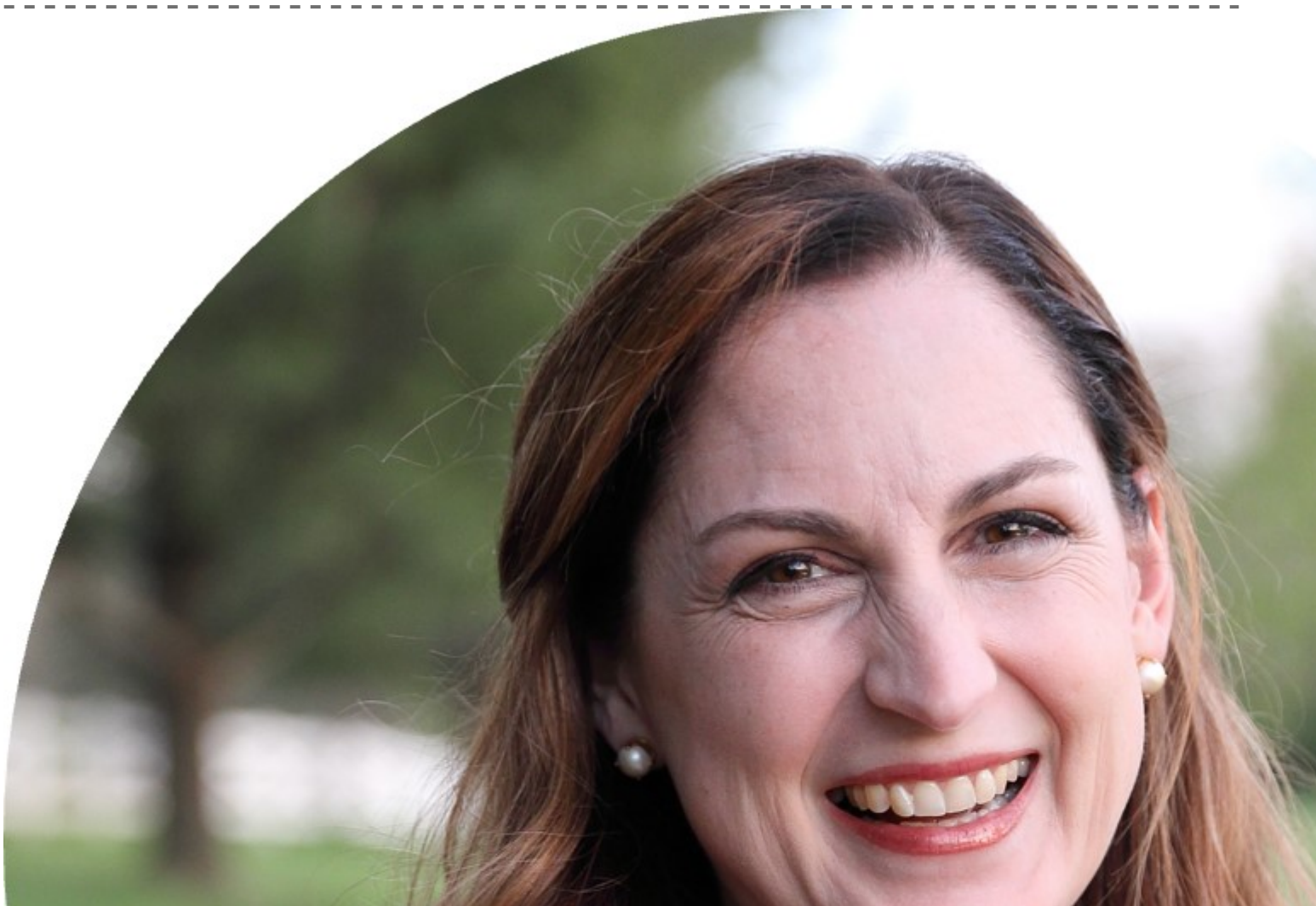
[Workers' Comp](#)

# Navigating the 'New Normal' in Workers' Comp: Rethinking Work and Automation

March 30, 2023

1 MIN READ

---



## [Rebecca Morgan](#)

Norms around work and workers' compensation have changed due to the Great Resignation and pandemic. Everyone is grappling with what is next and reflecting on lessons learned to adopt going forward. What will the rest of 2023 bring? What will our "new normal" look like? How can we leverage technology to counter some of these challenges? In this PRIMA magazine article, Rebecca Morgan details strategies you can use to improve processes and focus our resources for high-value tasks in this changing landscape.

[Download Now](#)



©2022 Enlyte Group, LLC.

mitchell | genex | coventry